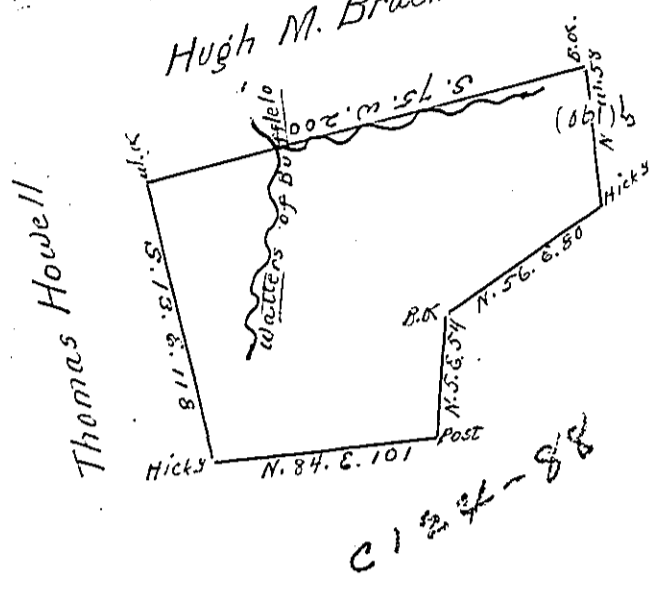


a-10-136

Hugh M. Brackenridge Esqr.



The above is a draught of a Survey made 27th April 1786 in pursuence of a warrant granted to William Wallace in sight of his wife late Martha McBride dated ~~Sept~~ <sup>Sept</sup> Novr 28th 1785 Containi<sup>ng</sup> one hundred and Seventeen acres and one half with six plent for Roade use. and is called Martha's part.

L. & L. id Redick D.S.

John Luoblit. S.G.

IN TESTIMONY that the above is a copy of the original remaining on file in the Department of Internal Affairs of Pennsylvania, made conformably to an Act of Assembly approved the 16th day of February, 1833, I have hereunto set my Hand and caused the Seal of said Department to be affixed at Harrisburg, this second day of September 1902

*James W. Fatta*  
Secretary of Internal Affairs.